

TZANEEN
UITBREIDING
EXTENSION 81

ERF 4721 tot 4723 en 5749

VIR GOEDKEURING AANBEVEEL
RECOMMENDED FOR APPROVAL

[Signature]
MANAGER: PLANNING AND
ECONOMIC DEVELOPMENT

TZANEEN 31/05/2010

GOEDGEEKUR, TZANEEN MUNICIPALITY
APPROVED

31 MAY 2010

[Signature]
MANAGER: PLANNING & ECONOMIC DEVELOPMENT
GREATER TZANEEN MUNICIPALITY

SKAAL/SCALE 1:2500

USE ZONE VI - "BUSINESS 2"

ERF 4723 TZANEEN UITBREIDING 81

In addition to the conditions applicable to "Business 2" erven, the following conditions shall also be applicable:

- 1. Height of buildings shall be limited to three (3) storeys.

USE ZONE IV - "RESIDENTIAL 4"

ERVEN 4721 - 4722 and 5749 TZANEEN UITBREIDING 81

In addition to the conditions applicable to "Residential 4" erven, the following conditions shall also be applicable:

- 1. Height of buildings shall be limited to four (4) storeys.

GEBRUIKSONE VI - "BESIGHEID 2"

ERF 4723 TZANEEN UITBREIDING 81

Beskerming tot die standaard voorwaardes van toepassing op "Besigheid 2" erwe, sal die volgende voorwaardes ook geld:

- 1. Hoogte van geboue sal beperk word tot drie (3) verdiepings.

GEBRUIKSONE IV - "RESIDENSIELE 4"

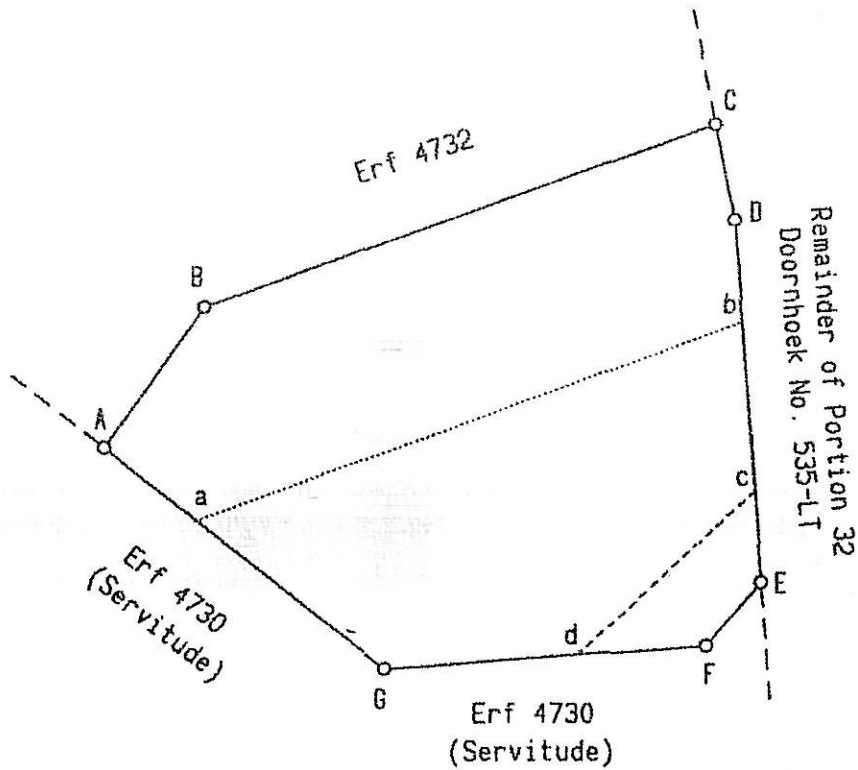
ERWE 4721 - 4722 en 5749 TZANEEN UITBREIDING 81

Beskerming tot die standaard voorwaardes van toepassing op "Residensieel 4" erwe, sal die volgende voorwaardes ook geld:

- 1. Hoogte van geboue sal beperk word tot vier (4) verdiepings.

CONSOLIDATION DIAGRAM

OFFICE COPY



S.G. No.
1517/2008

Approved

for
SURVEYOR-
GENERAL

2008.12.08

Ordinance No.15/1986

Section 92

Plan and Certificate

Remainder of Portion 32
Doornhoek No. 535-LT



Scale 1:1250

Component	Figure	Description	General Plan	Deed No.
1.	ABCDbaA	Erf 4721	8247/2007	T55003/2008
2.	abEFGa	Erf 4722	8247/2007	T55004/2008

The figure **A B C D E F G A** of land being
Represents **6915 square metres**
ERF 5748
of the Township
TZANEEN EXTENSION 81

(Comprising components 1 and 2 above)

Province: Limpopo

Compiled in September 2008 by me

F.J. Loock PLS - 1096
Professional Land Surveyor

This diagram is annexed to No. d.d. i.f.o. Registrar of Deeds Pretoria	The original diagrams are as listed above	File TSP (VOL.1) S.R. G.P. S.G.No. 8247/2007 Comp. LTSL-44
--	---	---